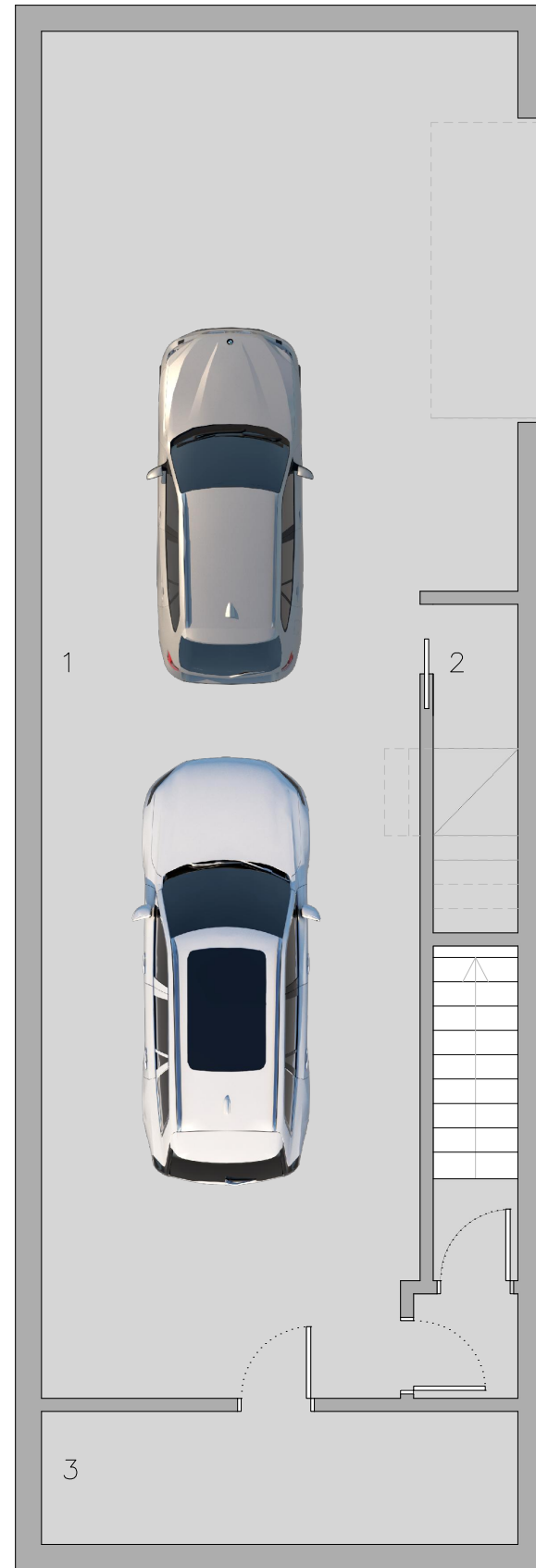


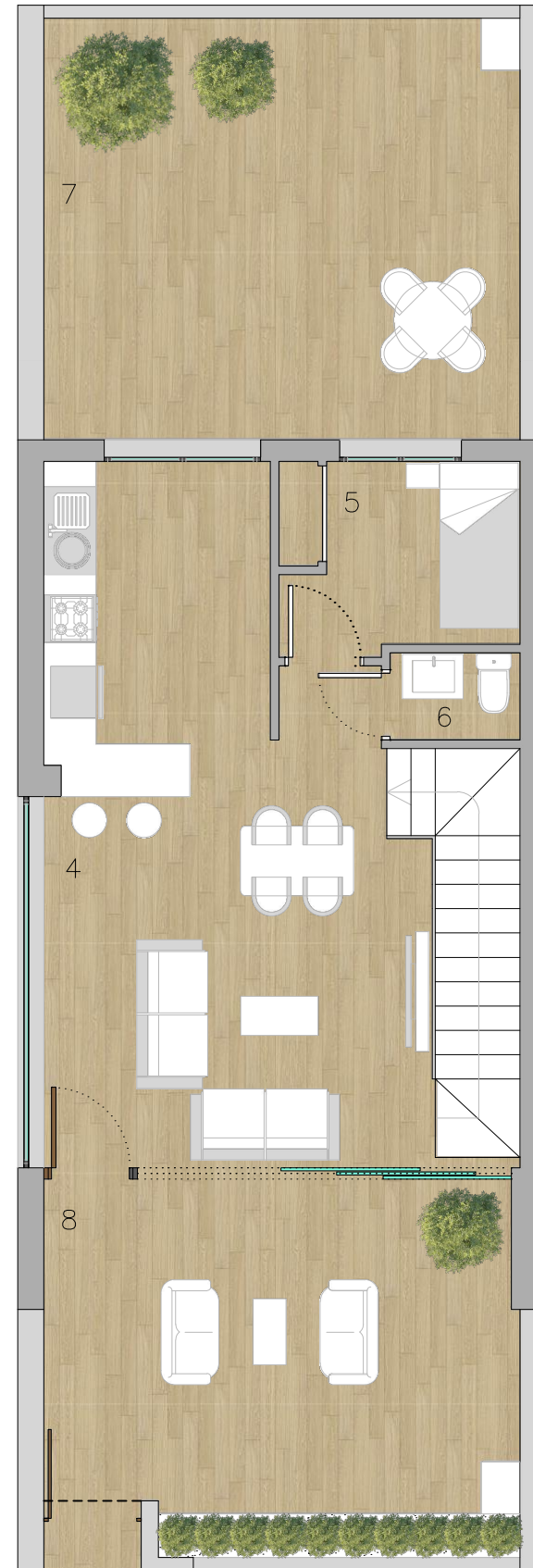


LAS VILLAS DE JUAN CARLOS I



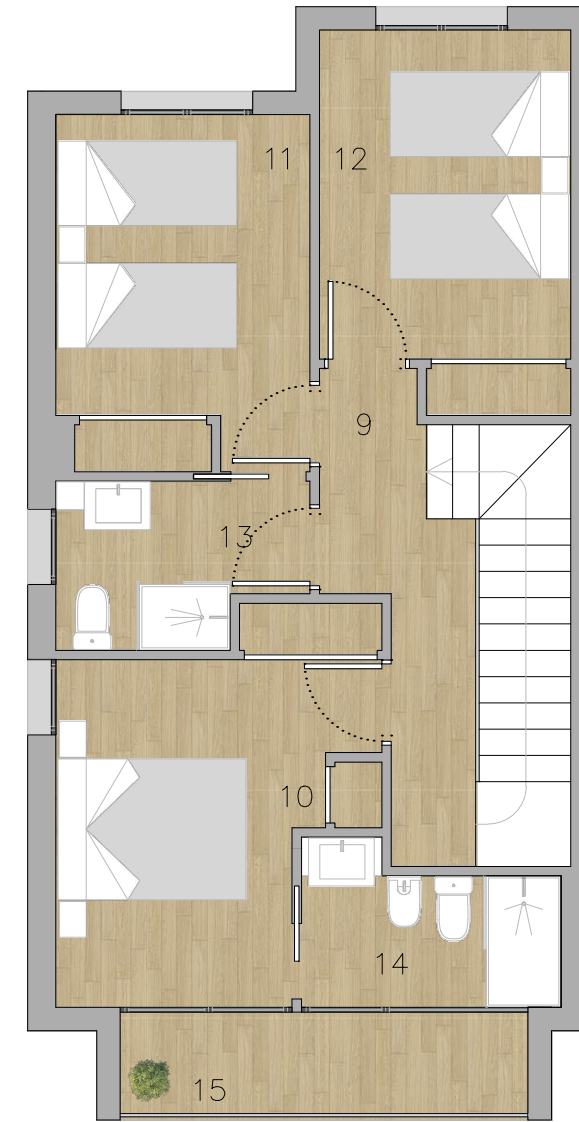
PLANTA DE SÓTANO

SUPERFICIES ÚTILES POR ESTANCIAS		
1	GARAJE	79.90 M2
2	TRASTERO	3.70 M2
3	LAVANDERIA	8.40 M2
4	SALON COMEDOR COCINA	31.50 M2
5	DORMITORIO 4	6.00 M2
6	ASEO	1.50 M2
7	TERRAZA TRASERA	26.90 M2
8	TERRAZA DELANTERA	23.85 M2
SUPERFICIE ÚTIL VIVIENDA		181.70 M2

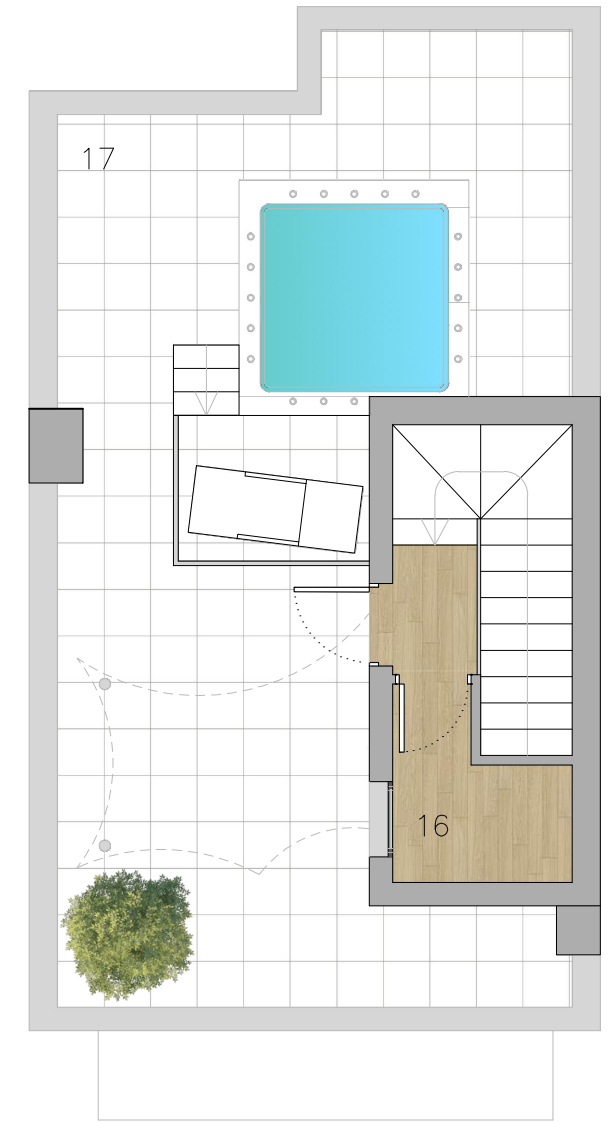


PLANTA BAJA

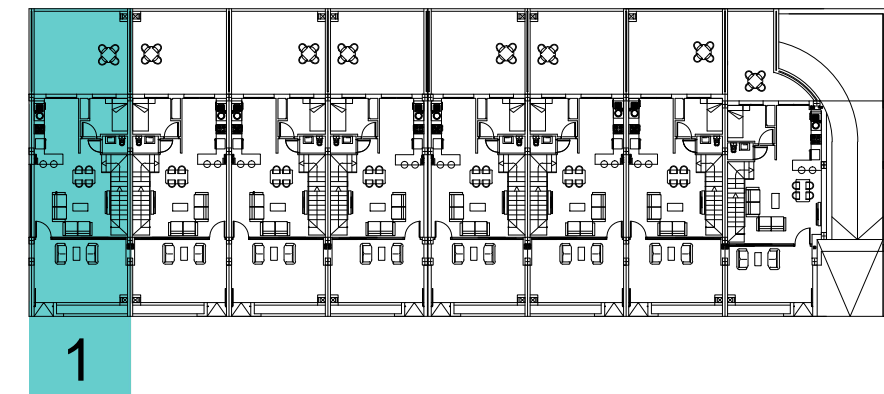
9	DISTRIBUIDOR	6.40 M2
10	DORMITORIO 1	11.00 M2
11	DORMITORIO 2	10.30 M2
12	DORMITORIO 3	10.30 M2
13	BAÑO 1	4.30 M2
14	BAÑO 2	4.40 M2
15	TERRAZA CUBIERTA	4.35 M2
16	TRASTERO	3.10 M2
17	SOLARIUM	43.25 M2
SUPERFICIE CONSTRUIDA VIVIENDA		241.65 M2



PLANTA PRIMERA



PLANTA SOLARIUM



1